

Merlot 289

HERMITAGE HOMES



Living	212.5sqm	22.9sq
Outdoor Living	13.3sqm	1.4sq
Porch	5.7sqm	0.6sq
Garage	36.3sqm	3.9sq
TOTAL	267.8sqm	28.8sq

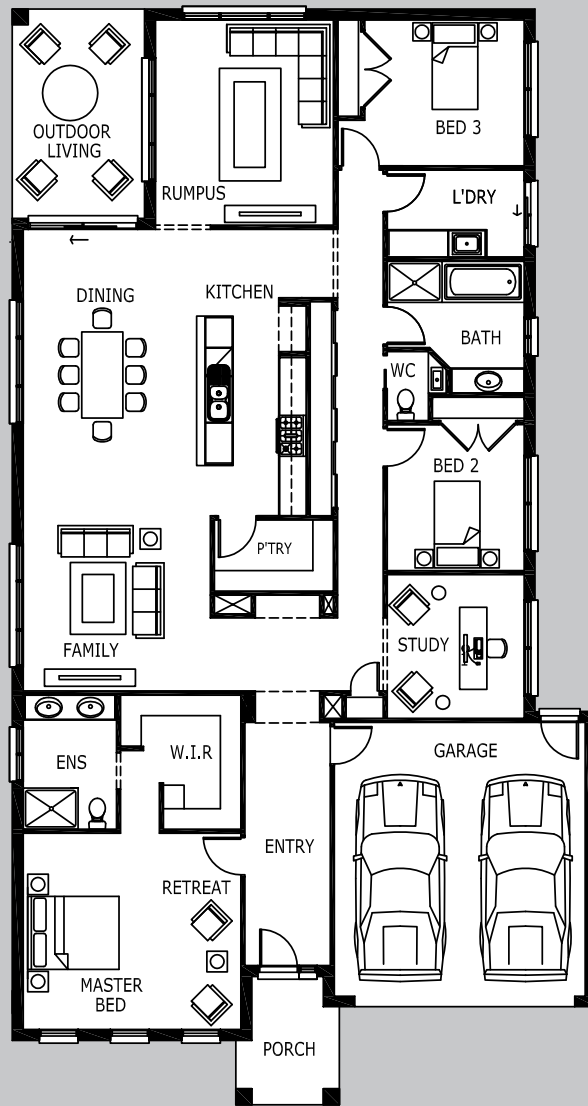


Living Areas

Dining	4.1 x 3.8m
Family	4.1 x 3.8m
Rumpus	3.9 x 4.5m
Study	3.0 x 3.1m

Bedrooms

Master Bed	4.8 x 4.3m
Bed 2	3.0 x 3.2m
Bed 3	4.1 x 3.2m



Visit hermitagehomes.com.au or call 1800 055 511

Hermitage Properties Pty Ltd • Unit 2, 4 Corporate Avenue Rowville Vic 3178

Floorplans and sizes are correct at the time of printing. Size of the home may vary depending on the facade chosen. Plans are exclusively owned by Hermitage Homes and cannot be reproduced or copied, without the written permission of Hermitage Homes. Pictures are for illustrative purposes only and not necessarily representative of our standard inclusions.