

Hunter 4 | 1

HERMITAGE HOMES



Living	314.2sqm	33.8sq
Outdoor Living	14.8sqm	1.6sq
Awning/Balcony	6.5sqm	0.7sq
Porch	6.4sqm	0.7sq
Garage	40.1sqm	4.3sq
TOTAL	382.0sqm	41.1sq

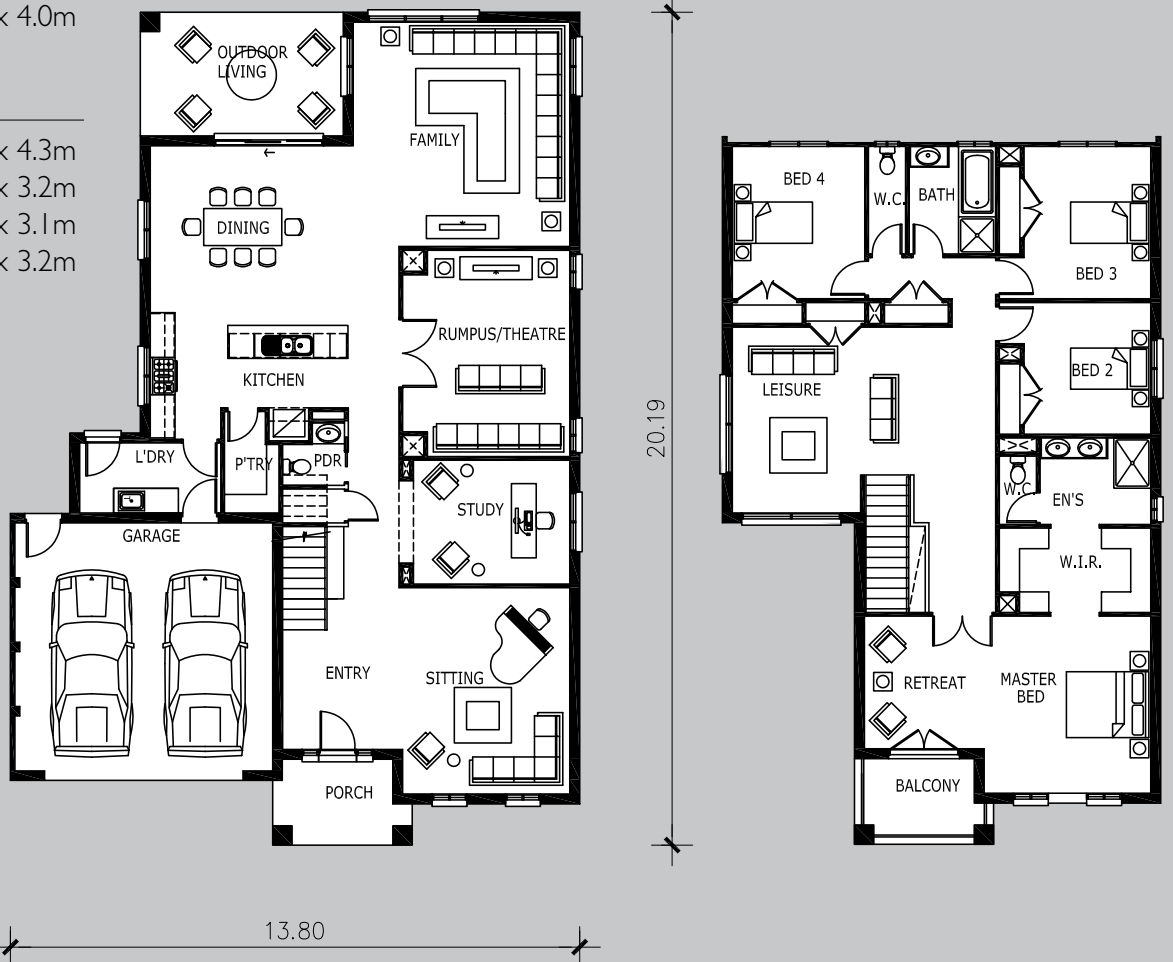


Living Areas

Dining	4.9 x 4.1m
Family	5.4 x 5.3m
Rumpus/Theatre	5.0 x 3.5m
Sitting	4.1 x 5.0m
Study	3.8 x 3.0m
Leisure	4.5 x 4.0m

Bedrooms

Master Bed	4.1 x 4.3m
Bed 2	3.1 x 3.2m
Bed 3	3.7 x 3.1m
Bed 4	3.7 x 3.2m



Visit hermitagehomes.com.au or call 1800 055 511

Hermitage Properties Pty Ltd • Unit 2, 4 Corporate Avenue Rowville Vic 3178

Floorplans and sizes are correct at the time of printing. Size of the home may vary depending on the facade chosen. Plans are exclusively owned by Hermitage Homes and cannot be reproduced or copied, without the written permission of Hermitage Homes. Pictures are for illustrative purposes only and not necessarily representative of our standard inclusions.